

MONTHLY MEMBERSHIP PROGRESS REPORT

District 13 OH1

Results as of: 9/30/2024

GMT:

LOCATION OHIO

GMT CA

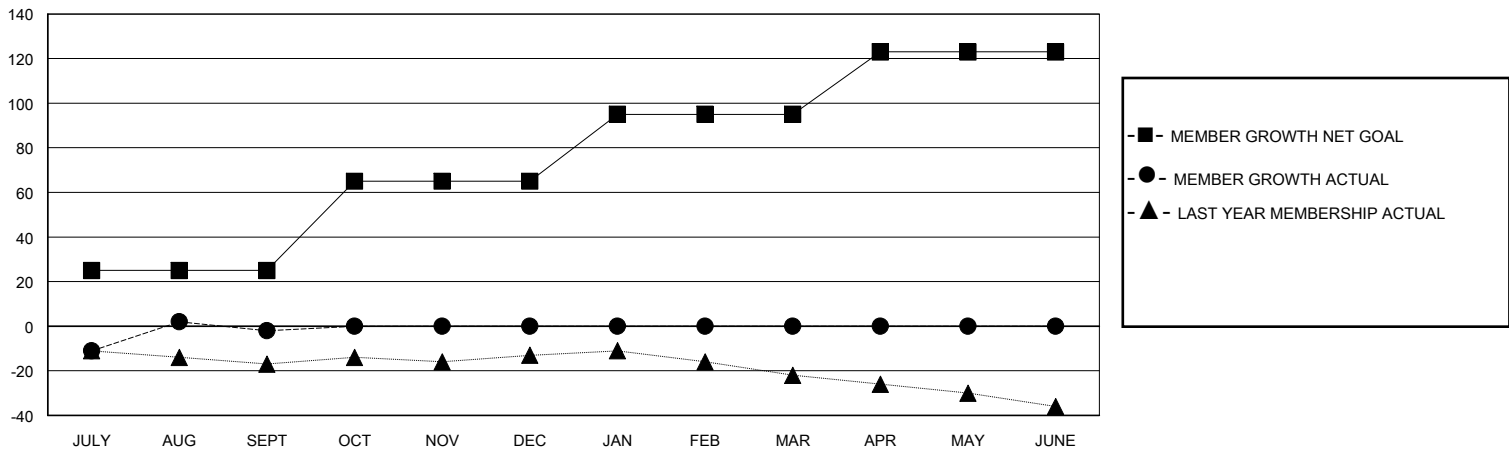
Clubs			
RESULTS FOR 2024-2025			
QUARTER	NEW CLUB GOAL	NEW CLUBS	DROPPED CLUBS
JULY/AUG/SEPT	0	0	0
OCT/NOV/DEC	1	0	0
JAN/FEB/MAR	0	0	0
APR/MAY/JUNE	0	0	0

Members			
RESULTS FOR 2024-2025			
QUARTER	MEMBER GROWTH NET GOAL	MEMBER GROWTH ACTUAL	DROPPED MEMBERS ACTUAL (including transfers)
JULY/AUG/SEPT	25	27	28
OCT/NOV/DEC	40	0	0
JAN/FEB/MAR	30	0	0
APR/MAY/JUNE	28	0	0

GOALS AND ACTUAL NEW CLUBS CUMULATIVE



GOALS AND ACTUAL MEMBERS CUMULATIVE



DROPPED CLUBS: 0	12 CLUBS OF 49 ADDED 1 OR MORE NEW MEMBERS	GENDER DISTRIBUTION MALE 1,101 (78.59%) FEMALE 300 (21.41%)
DROPPED MEMBERS DECEASED 6 CLUB CANCELLED 0 OTHER 22 TOTAL 28	CLICK HERE FOR CUMULATIVE MEMBERSHIP DATA	TOTAL FAMILY UNIT MEMBERS 0 FAMILY MEMBERS PAYING HALF DUES 0